

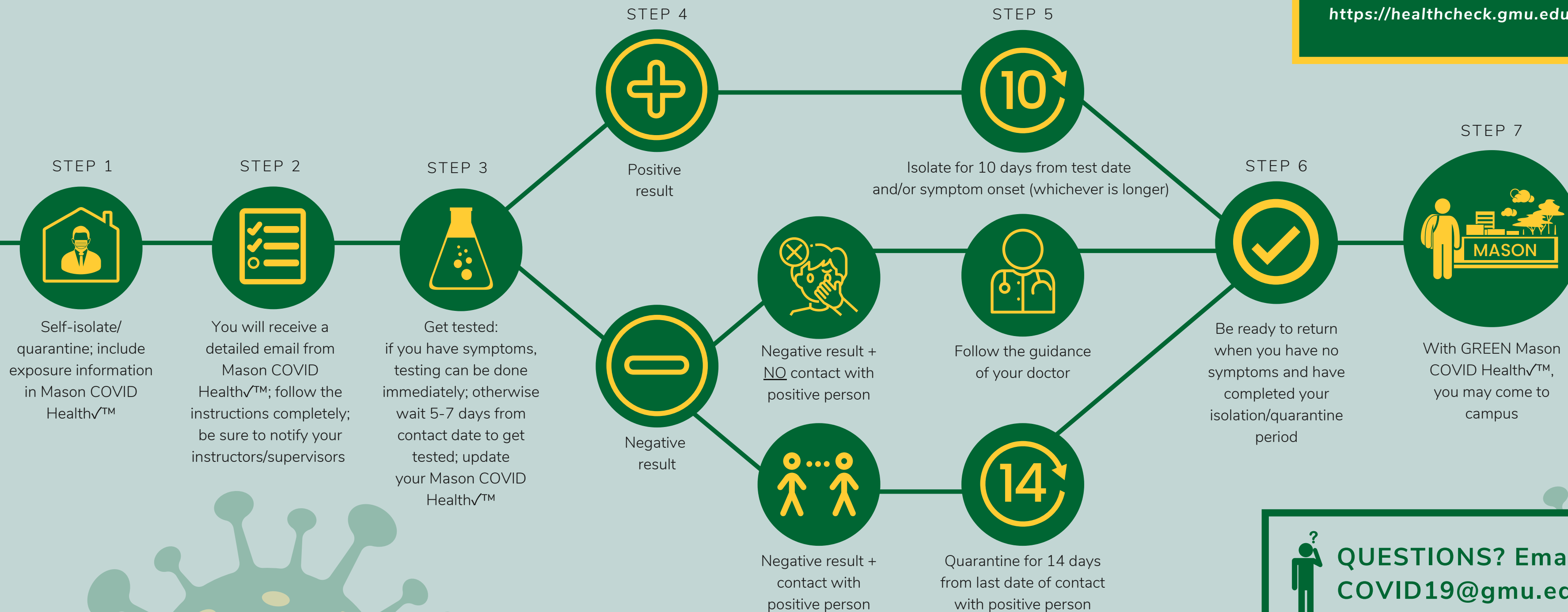
FOR STUDENTS COMING TO CAMPUS THIS SEMESTER:

If you feel sick or have been in contact with someone who has tested positive for COVID-19

 **REMEMBER!**

YOU ARE REQUIRED TO COMPLETE THE MASON COVID HEALTH[✓]™ DAILY!

<https://healthcheck.gmu.edu>

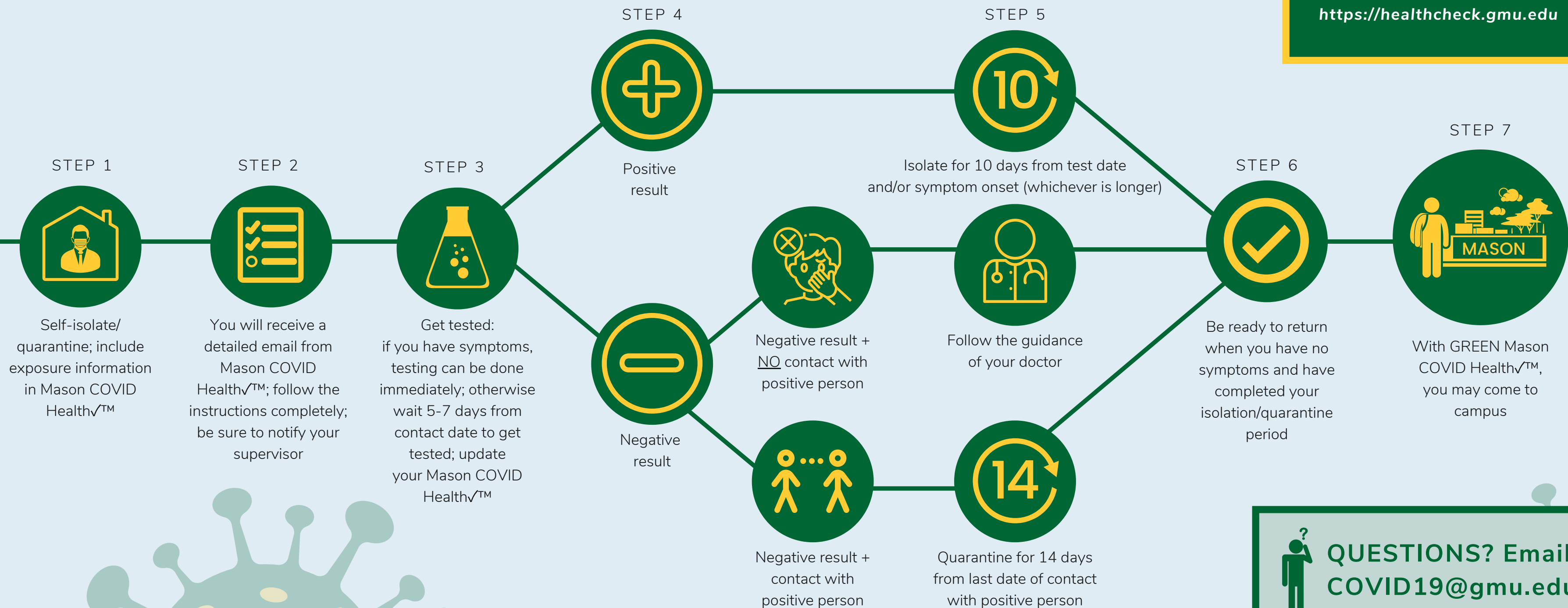


 **QUESTIONS? Email COVID19@gmu.edu**

FOR STAFF COMING TO CAMPUS THIS SEMESTER:

If you feel sick or have been in contact with someone who has tested positive for COVID-19

 **REMEMBER!**
YOU ARE REQUIRED TO COMPLETE THE MASON COVID HEALTH[✓]™ DAILY!
<https://healthcheck.gmu.edu>

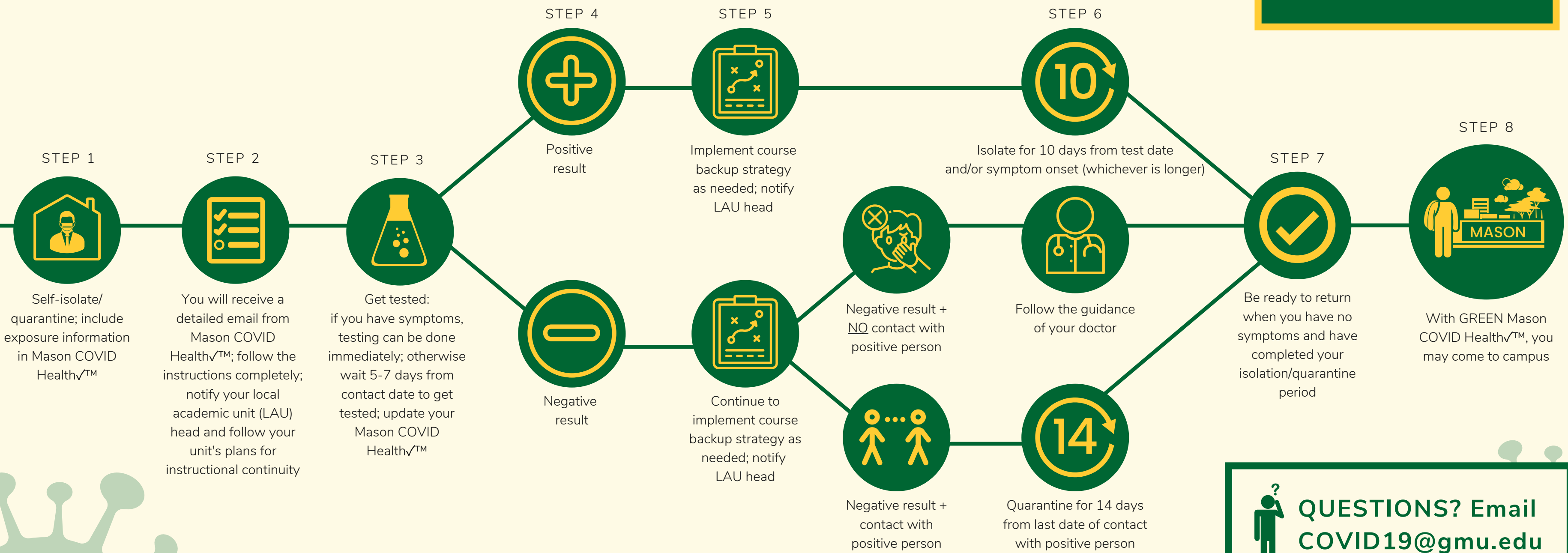


 **QUESTIONS? Email COVID19@gmu.edu**

FOR INSTRUCTORS/FACULTY COMING TO CAMPUS THIS SEMESTER:

If you feel sick or have been in contact with someone who has tested positive for COVID-19

 **REMEMBER!**
YOU ARE REQUIRED TO COMPLETE THE MASON COVID HEALTH[√]™ DAILY!
<https://healthcheck.gmu.edu>



 **QUESTIONS? Email COVID19@gmu.edu**